

Your Bridge to Early Detection of Heart Disease, Stroke and Cancer





Early Detection is the Key

Heart disease, stroke and cancer are the leading causes of death in the world. Over half of these deaths occur in people without warning signs – often the first sign of a potential health problem is a heart attack, sudden death and stroke whilst the earliest cancer symptoms may not occur until the disease is widespread.

Early detection and timely intervention pave the way for early treatment and can reduce future complications and treatment costs.

About Hospital Picaso Health Screening Centre

Preventive health screenings are key to early detection and effective management of potential health issues. By identifying risks early, you can take proactive steps to safeguard your well-being and enjoy life to the fullest.

Put your health in good hands with Hospital Picaso Health Screening Centre, operated by Cardiac Vascular Sentral Kuala Lumpur (CVSKL), an integrated cardiac and vascular hospital located in KL Sentral. The health screening centre in Hospital Picaso aims to replicate the contemporary health screening experience, ensuring personalized care for every patient.

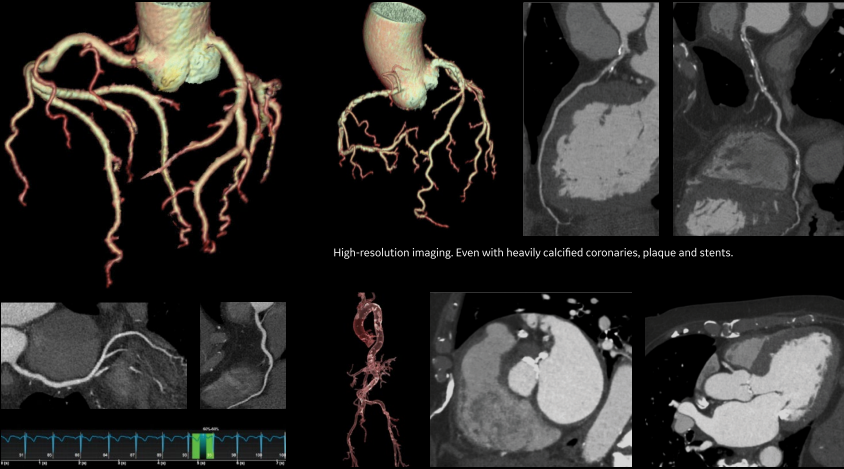


With a multidisciplinary team of cardiologists, nurses, radiographers, dietitians and cardiovascular technicians, a holistic assessment of your health can be carried out to ensure accurate diagnosis of your health status.



Revolution Frontier CT Scanner

Cardiac



High-resolution imaging. Even with heavily calcified coronaries, plaque and stents.

One-beat cardiac. At any heart rate.
Even in atrial fibrillation. With low dose.

CT TAVI/TAVR planning. Single scan. Single injection. With low contrast volume.

High-quality imaging generated from the
Revolution Frontier CT Scanner

Advanced Solutions

With more than 10 years of experience, our professional team offers comprehensive health screening services combined with modern technology under one roof.

The centre houses the Revolution Frontier CT scanner, a highly versatile CT platform capable of catering to a wide range of imaging needs for each and every patient.

On top of its adaptive clinical applications, the Revolution Frontier CT scanner is designed to deliver clear, precise images and faster scans, all while prioritising patient safety through Adaptive Statistical Iterative Reconstruction (ASiR-V), a technology that significantly reduces radiation exposure.

Our Other Quick and Innovative Clinical Services Include:

- Onsite chemical and pathology laboratory, ensuring that you obtain your results on the same day
- Non-invasive cardio-respiratory diagnostic facilities including ECG, stress test, lung function test, body-fat analysis and echocardiography
- General X-ray, ultrasound, DEXA bone densitometry and 3D mammography
- Onsite cardiology and medical clinic
- Fully integrated system which compiles and binds your medical reports for you to take home on the same day





Your Experience, Our Priority

We also recognise that the environment in which you receive care can have a significant impact on your healthcare experience.

Indulge yourself with our complimentary and healthy dietitian-designed meals with the convenience of our free Wi-Fi and amenities after you have completed your tests.

Preparing For Your Health Screening

In order for us to serve you better, please secure your preferred timing by booking an appointment in advance.

To make an appointment, please reach out to us via:

WhatsApp & Phone Number: +603-7457 2821

Email: hsc@picasohospital.com

Guidelines

- Please fast for at least 6 hours before the health screening test. Drinking plain water is allowed.

What to Bring

- NRIC/passport (for foreigners).
- Running attire (T-shirt, shorts, jogging shoes) if your package includes a stress test.



Diagnostic Packages

Packages	Charges (RM)
1. Premium (Full lab profile plus CRP, ECG, stress test, lung function test, chest X-ray, body fat analysis, ultrasound upper abdomen, cardiovascular risk score and consultation by cardiologist and dietitian)	1200
2. Premium Plus (Premium package plus H. pylori, tumour markers and ultrasound pelvis)	1450
3. Premium & Cardiac Evaluation	2000
4. Premium & Cardiac & Stroke Evaluation	2700
5. Premium & Cardiac & Cancer Evaluation	2800
6. Premium & Cardiac & Cancer & Osteoporosis Evaluation	3000
7. Premium & Cardiac & Cancer & Stroke Evaluation	3300
8. Premium & Cardiac & Cancer & Stroke & Osteoporosis Evaluation	3500

*Additional charge of RM400 for female option on all the above packages. Includes ultrasound breast/3D mammography and pap smear.

*All packages and charges are subjected to change without prior notice.

P;caso

HOSPITAL PICASO

PJ Integrated Centre
for Advanced Surgery
and Oncology



HOSPITAL PICASO

No. 110, Jalan Professor Khoo Kay Kim,
Seksyen 19, 46300 Petaling Jaya,
Selangor Darul Ehsan, Malaysia

Emergency Line : +603-7457 2999

General Line : +603-7457 2888

 Hospital Picaso

 hospitalpicaso

 hospitalpicaso

 hospitalpicaso.com

 hospitalpicaso

 Hospital Picaso